

ASSEMBLY AND INSTRUCTION MANUAL

MODEL 0220 MODI

© 2020 KURT BEIER & KATI QUINGER



Seat cushion continuously motorised extendable to the relax position



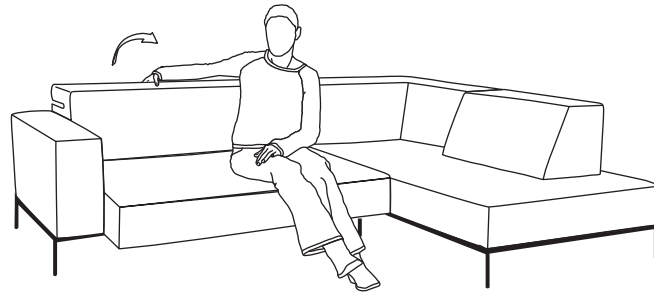
Backrest manually adjustable to the desired seat depth



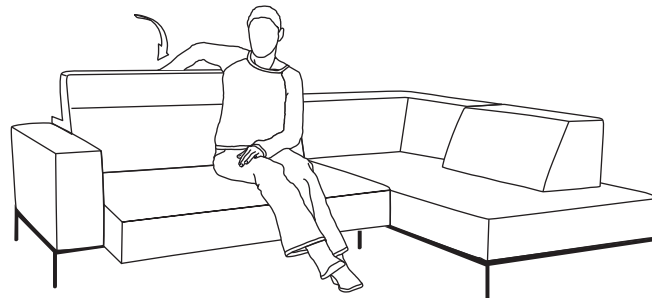
Headrest to raise for comfortable high-back comfort

Adjustment of headrest:

1. To adjust the desired position grip the headrest from the outside and lift it carefully upwards.



2. To obtain zero position pull the headrest carefully beyond the top position into your direction and fold down into zero position.

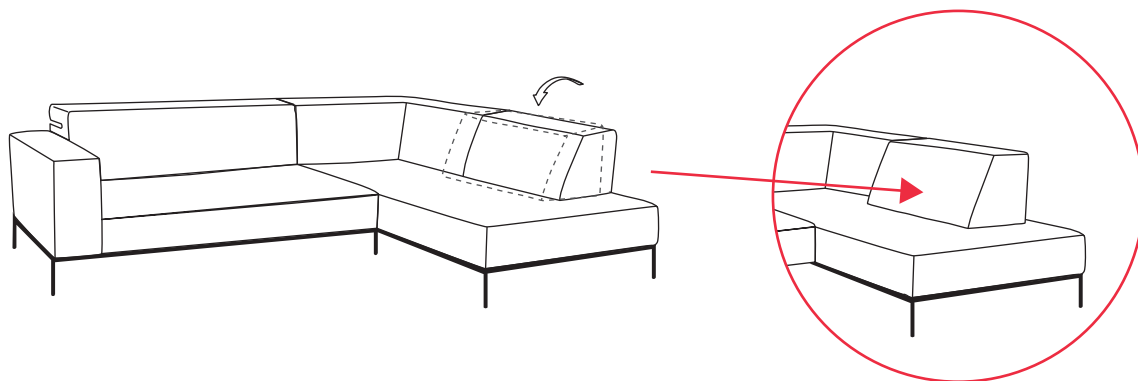


3. From zero position you can easily snap the headrest into desired position.

ATTENTION! DON`T SIT ON BACKS.

Use of back function:

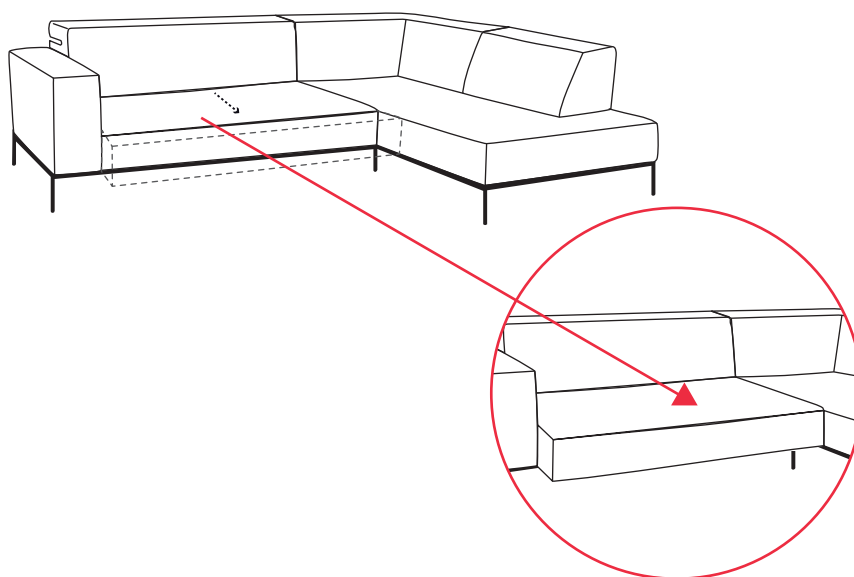
1. Reach under the back and pull it slightly upwards (into your direction) to move it forward.



2. To obtain back rear position, reach under the back and push it back upwards with a slight movement.

Use of motorised seat adjustment:

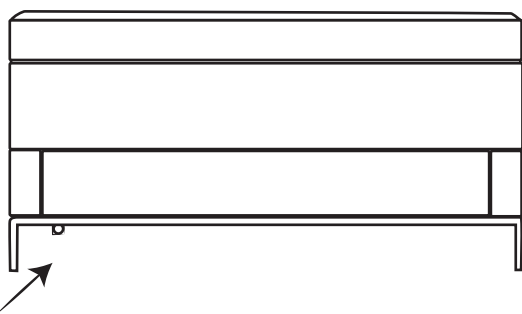
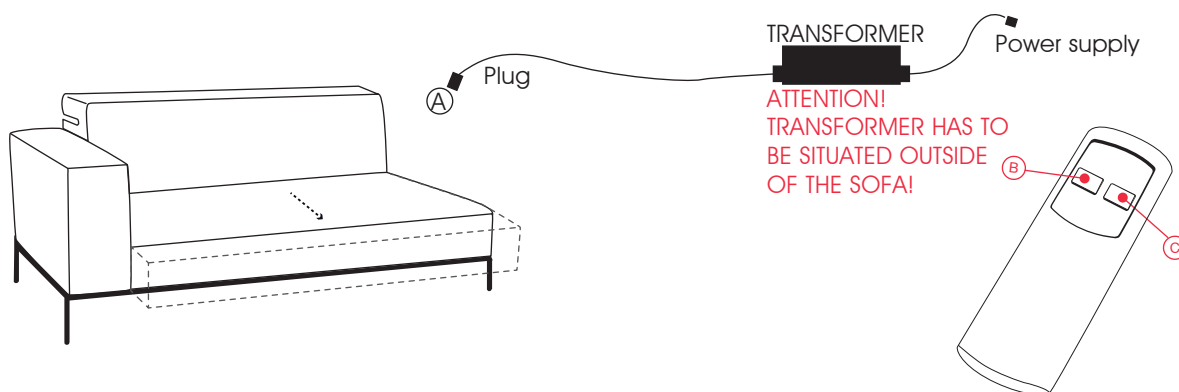
The seat can be extended continuously by means of the remote control. See next page.



Due to the seat and back function, there may be a slight noise when the seat is extended or retracted, depending on the cover material.

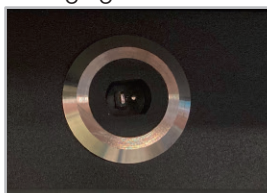
Use of motorised seat adjustment:

1. Insert the plug A into the charging socket at the bottom of the sofa and then the transformer into the socket.
2. By pressing the switch buttons B and C at remote control, the seat can be moved continuously to the required position.



The charging socket is always located on the back opposite the arm section.

Charging socket



Motorised seat adjustment - Programming of transmitter and receiver

Delivery condition: already synchronised

November 2021

Brief instruction, Pairing-Method:

Should a new start-up of remote control be necessary the wireless communication with the control/motor must be established. Proceed as follows:



1. Press pairing buttons A at receiver 2 x until the LED indicates. The pairing process is active for about 10 seconds.

2. Press simultaneous button B and C at the transmitter until the green LED at the receiver vanishes. This confirms a successful pairing process.

Note: For the pairing process the distance between transmitter and receiver should be less than 2 metres.

The programming is completed, the transmitter is now ready for operation. If the motor doesn't start while pressing, release the button and press again. If necessary retry the process.

The programming is completed, the transmitter is now ready for operation. If the motor doesn't start while pressing, release the button and press again. If necessary retry the process.



Put drive systems into operation successively, **don't** operate several systems simultaneous. Otherwise the remote control cannot be assigned clearly by control/motor.