

ASSEMBLY AND INSTRUCTION MANUAL

MODEL OD0318 BABOO

© 2018 KURT BEIER & KATI QUINGER



Motorised functional back
and footrest,
head flap, manual



360° rotary function

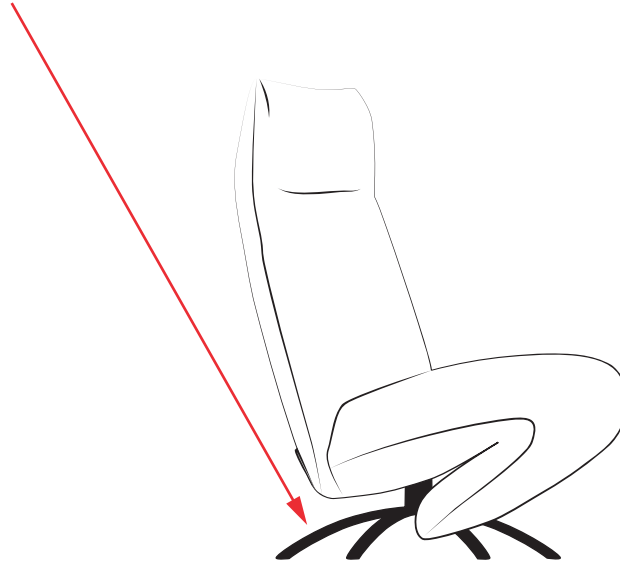


Pocket for remote control

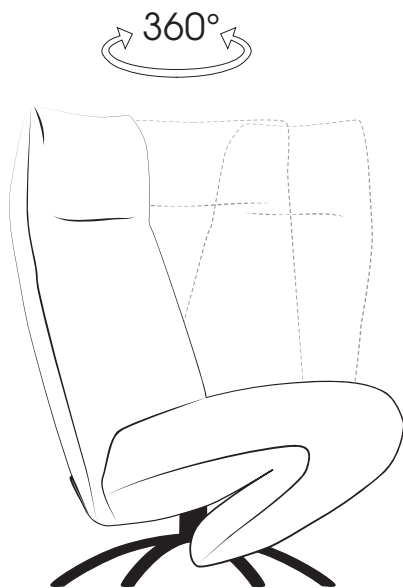
Attention! Safety note:

The cross frame is plugged into a conical turning spindle.

For transportation it is absolutely necessary to lift up the chair at the cross frame.

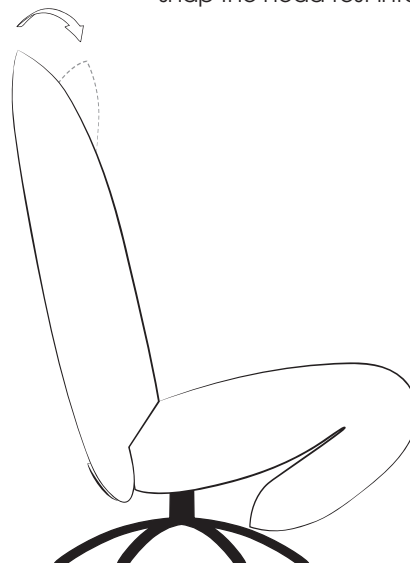


360° rotary function:



Adjustment of head-rest:

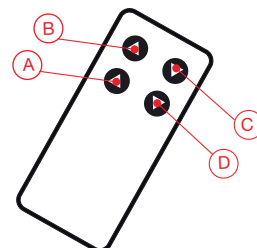
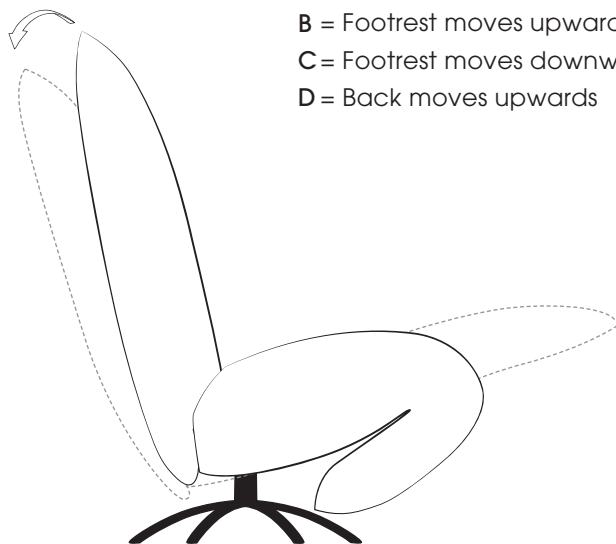
1. To adjust the desired position grip the head-rest from the outside and pull it carefully towards yourself.
2. To obtain zero position pull the head-rest carefully beyond the top position towards yourself and fold it down into zero position.
3. From zero position you can easily snap the head-rest into desired position.



Motorised back and footrest adjustment:

Sitting and reclining function: The individual sitting or reclining functions are operated via the remote control.

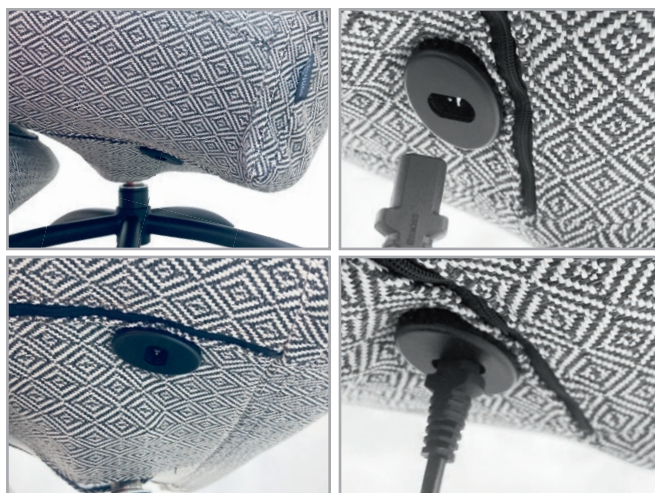
- A = Back moves backwards
- B = Footrest moves upwards
- C = Footrest moves downwards
- D = Back moves upwards



*Wireless remote control:
Warning of magnetic field.*

Attention!

The charging socket is always located at the right side (with view from the front).



Motorised seat adjustment - Programming of transmitter and receiver

Delivery condition: already synchronised

November 2021



**Wireless remote control:
Warning of magnetic field.**

Brief instruction, Pairing-Method:

Should a new start-up of remote control be necessary the wireless communication with the control/motor must be established. Proceed as follows:

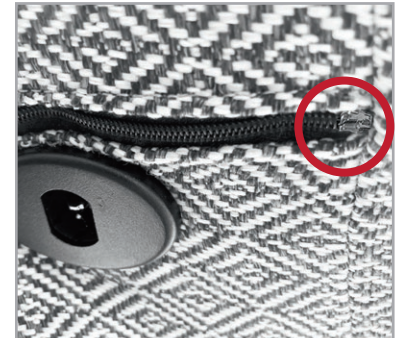
Attention: The furniture should always be lifted/tilt over by two people!



Receiver

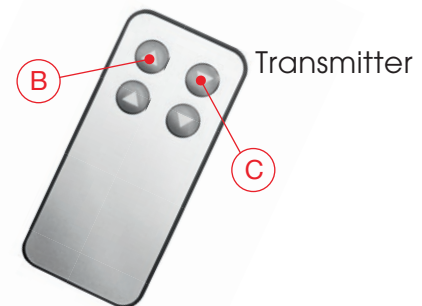
The receiver is located on the right-hand side under the cover (with view from the front).

Tilt the armchair on the left side. Use a suitable support to avoid damaging the cover or the floor.



Open the zip underneath the armchair. The receiver is located inside of the armchair.

Programming of transmitter and receiver:



1. Press pairing buttons A at receiver 2 x until the LED indicates. The pairing process is active for about 10 seconds.

2. Press simultaneous button B and C at the transmitter until the green LED at the receiver vanishes. This confirms a successful pairing process.

Note: For the pairing process the distance between transmitter and receiver should be less than 2 metres.

The programming is completed, the transmitter is now ready for operation. If the motor doesn't start while pressing, release the button and press again. If necessary retry the process.



Put drive systems into operation successively, **don't** operate several systems simultaneous. Otherwise the remote control cannot be assigned clearly by control/motor.